

Instructions for ModHelper 2.0

Convers^{*mod*}
www.conversmod.de

1 Table of Contents

1. contents
2. Download
3. installation
4. First start
5. main menu
6. Order ConversMod firmware
7. Download ConversMod firmware
8. Install ConversMod firmware
9. More settings
 - change language
 - get additional programs

Convers^{*mod*}
www.conversmod.de

2. Download

The latest version of our ModHelper in version 2.0 can be found at:

www.conversmod.de/files/ModHelperSetup.exe

3. Installation

Start the file ModHelperSetup.exe. The Setup Wizard now guides you through the installation very easily.

Convers^{*mod*}
www.conversmod.de

4. First start

(Optional) If a message appears at the first start that Net Framework 4.5.2 is missing on your PC, please install it. You can find the download further down on the page to which you will be automatically redirected to.

When starting for the first time, the ModHelper prompts you to install the drivers for the most common ELM327 adapters (to be implemented). If your ELM327 or CM327 is already successfully used on your PC, you can skip this step.

If you tick the "Don't ask me again" option, this message will no longer appear in the future.

It is also asked whether the so-called FTDI fix should be applied. It is recommended to do this step. The ModHelper will remember your answer if you tick the "Don't ask me again" option. In the case the FTDI fix is no longer carried out or is carried out automatically with every start.

The FTDI fix corrects the latency in the driver settings to 2ms. Except in very special cases, there is no reason not to do this.

convers+mod
www.conversmod.de

5. Main menu



Convers+mod
www.conversmod.de

6. Order ConversMod firmware

Open the Mod menu

Choose "order mod"

Decide how you want to install the ConversMod firmware:

1.ELM327, CM327 or ELS27 => ELM327

2. UCDS => UCDS

3. Installation service => installation by location

If you choose the first option, your equipment will be tested (next page).

The other two options you will be forwarded directly to the website.

Convers+*mod*
www.conversmod.de

For the test run, please connect a charger to your car battery to ensure sufficient on-board voltage.

Connect your ELM327 / CM327 / ELS27 to the USB port of your PC and to the diagnostic connector of your car. You can find this in a compartment or behind a cover to the left of the steering wheel.

On the ELM327, please set the switch on the adapter to the MS-Can. Please also note the other information from the "Preparation" message.

A test run is now carried out fully automatically and, if successful, our website for ordering your firmware opens automatically. The test run takes about 11 minutes.

During the test run, the Convers + display turns black and the symbols for the hazard lights flash. This is normal.

Convers+^{mod}
www.conversmod.de

If you did a test run, the correct selection of the installation type is already preset. The points "Chassis number", "NVM target ROM" and "Convers + serial number" have already been completed.

If you want to install via UCDS, please select "Self installation with original UCDS" at the bottom of the first list. You can find your chassis number on the driver's side at the bottom of the windscreen (from the outside). The NVM target Rom or part number of your Convers + and the serial number can be found in UCDS:

Open UCDS

Put UCDS in CAN mode (bottom right)

Select the menu for Mondeo / S-Max / Galaxy

Convers+*mod*
www.conversmod.de

Find the IPC from the list of modules
Right-click on the IPC
Choose "Poll Module"

Module Name: IPC		Network: MS-CAN Protocol: GGDS
F113	ECU Delivery Assembly Number	8M2T-10849-TC
F121	ECU Software #3 Part Number	AM2T-14C026-EB
F124	ECU Calibration Data #1 Number	AM2T-14C026-CF
F162	Software Download Specification Version	0x02
F163	Diagnostic Specification Version	0x02
F188	Vehicle Manufacturer ECU Software Number	AM2T-14C026-CF
F191	Vehicle Manufacturer ECU Hardware Number	8M2T-14C226-CA
F18C	ECU Serial Number	UKWP280X9TD

NVM target ROM

Seriennummer

Close UCDS again (!)

Convers^{mod}
www.conversmod.de

If you want to use the installation service at one of our locations, please select the appropriate location from the list.

You can find your chassis number on the driver's side at the bottom of the windscreen (from the outside).

You can read the NVM target Rom without any technical equipment:

Press and hold the "OK" button on the steering wheel

Switch on the ignition (do not start the engine)

Release the "OK" button as soon as the service menu appears

Use the arrow keys (up / down) to go to the entry "NVM target ROM"

In this case the serial number is not requested / required.

Convers+*mod*
www.conversmod.de

Please specify the other requested details of your car to ensure that we only offer you options that work for your vehicle. The information on motorization and equipment are therefore very important. Correcting false information can be subject to charge.


Convers+*mod*
www.conversmod.de

You will now see a selection of the basic packages.

Basis-Paket auswählen

Facelift **Name des Paketes**

Automatische Aktivierung der Einparkhilfe (ohne weitere Mods)




Bestandteile des Basis-Paketes:

- Version 1412 (NVM Target ROM)
- Anzeige der Einparkhilfe
- Anzeige des elektrischen Zuhelzers
- Kostenlose Alternativlogos (1 wählbar)
- Zusätzliche Pakete optional zubuchbar

30,00 €

Beschreibung/Inhalt des Paketes



Bestandteile des Paketes:

- Automatische Aktivierung der Einparkhilfe unterhalb ca. 14 km/h
- Vorübergehende Deaktivierung per Schalter möglich
- Benötigt eine GatewayBox OBD (im angezeigten Preis enthalten)
- Keine Funktionen oder Pakete des ConversMod enthalten (können später gebucht werden)
- Auch für Fahrzeuge ohne Convers+ verfügbar

Kann auch als Paket zu den normalen Basis-Paketen gebucht werden!

Gegebenenfalls zusätzliche Informationen

95,00 €

Only packages that are suitable for your vehicle or that may be suitable for your vehicle are displayed. Prerequisites may be displayed to you.

Convers+^{mod}
www.conversmod.de

You select a basic package by clicking on it (you do not have to click the OK button)

A message shows you that the basic package is in the shopping cart. For most packages, we automatically add your current start logo to your selection. You can adjust this selection in the next step using the "Change Convers + Logo" option. In addition to the series logo, you have various free and paid options available.

Convers+*mod*
www.conversmod.de

You can now add any suitable additional options.

Based on your information and selection, the system filters which packages are suitable for your vehicle and which, unfortunately, are not.

Example "suitable option":



Digispeed

from 10.00 €

WF0GXXGBBGDP16571 ▼

Enter new vehicle

In shopping cart

WF0GXXGBBGDP16571 - 10.00 €

Addon (add to Mod)

Please login for Addons

(Firmware for chassis number WF0GXXGBBGDP16571 is in the shopping cart and can be supplemented with this option.)

Convers^{mod}
www.conversmod.de

Example "incompatible option":



Automatic transmission oil temperature indicator

from 20.00 €

Enter new vehicle ▼

Enter new vehicle

Addon (add to Mod)

Please login for Addons

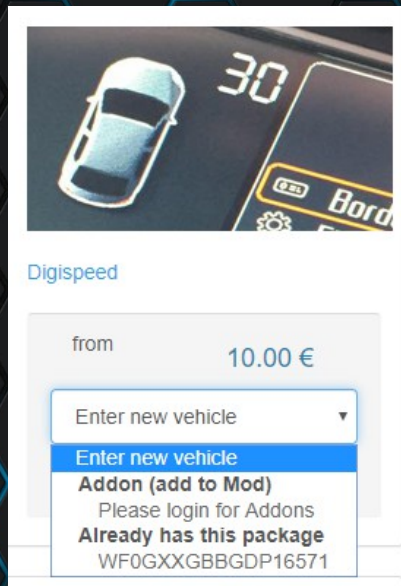
Not compatible

WF0GXXGBBGDP16571

(We have selected a manual transmission vehicle, but this package is only available for automatic transmission, so the chassis number appears under "Not compatible".)

Convers+*mod*
www.conversmod.de

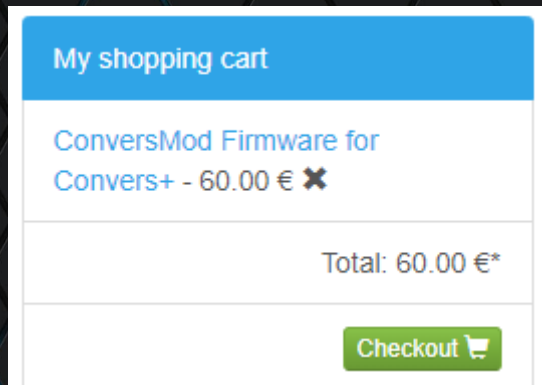
Example "option already selected":



(This option was already added to the shopping cart by clicking on the shopping cart symbol and is therefore displayed under "Already has this package".)

Convers^{mod}
www.conversmod.de

When you've added all the options you want, you can go to the checkout process by clicking on "Checkout" on the right side of the screen (on small screens at the bottom of the page).



Convers+^{mod}
www.conversmod.de

After you have ordered and paid (Self installation) , your individual ConversMod firmware is usually ready after a few minutes. We will inform you about this by email.

If you chose the installation service at one of our locations, the location will contact you within the next few days to arrange an appointment. Payment in advance is possible, but is usually not mandatory.

For self installation please continue with section 7.

Convers+^{mod}
www.conversmod.de

7. 7. Download ConversMod firmware

After you have ordered and we have received your payment, your individual ConversMod firmware will be ready after a short time. You will receive information about this via email (and possibly via SMS).

You will also receive a download tan, also by email.

Now open the ModHelper 2.0, if you had closed it

Go to the Mod menu

Choose "Download Mod"

Enter the ID of your firmware (also visible in our emails)

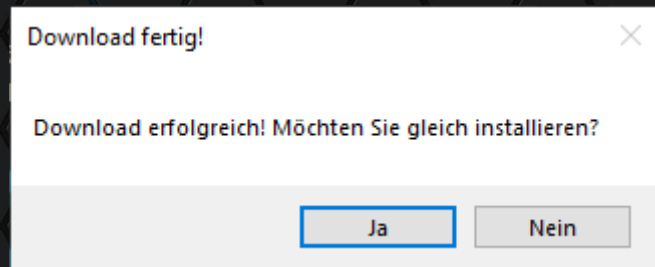
Click "OK" (this now takes up to 15 seconds)

Enter the download TAN

convers+*mod*
www.conversmod.de

Click "OK" (this now takes up to 60 seconds)

The following message appears (sorry, translation missing yet):



If you want to install your firmware later, select "Nein", otherwise please continue with "Ja" and proceed to section 6 of this manual.

convers+mod
www.conversmod.de

8. Install the ConversMod firmware

If you come directly from the download, please skip the next two steps.

**Open the Mod menu
Choose "Install Mod"**

**You will be shown which parts of your firmware are available.
All parts are selected, please continue with "Install".**

Convers+*mod*
www.conversmod.de

For installation, please connect a charger to your car battery to ensure sufficient on-board voltage.

Connect your ELM327 / CM327 / ELS27 or UCDS to the USB port of your PC and to the diagnostic connector of your car. You can find this in a compartment or behind a cover to the left (on the right for RHD) of the steering wheel.

With the ELM327 please set the switch on the adapter to the MS-Can. Please also note the other information from the "Preparation" message.

All parts are now installed fully automatically one after the other. The expected duration depends on many factors and is shown to you in the preparations.

Convers+mod
www.conversmod.de

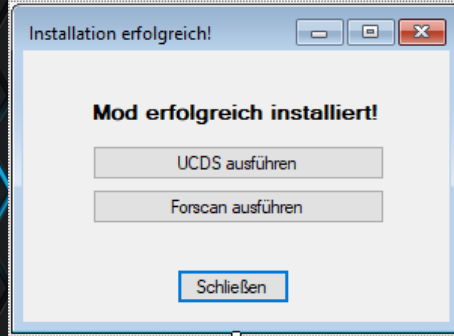
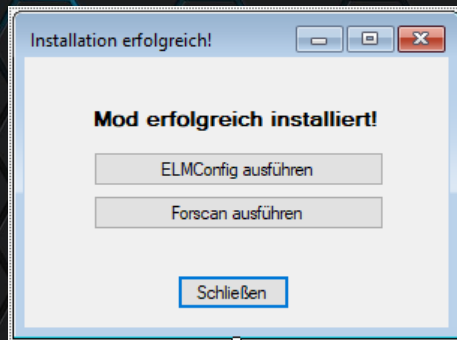
During the installation, the display of the Convers + may turn black and the symbols for the Hazard warning lights flash. This is normal.

After installation of all parts (up to 5 pieces) the following message appears:

ELM327 / ELS27 / CM327

UCDS

Convers+*mod*
www.conversmod.de



Only if you bought the TPMS patch:

For ELM327 / ELS27 / CM327:

Convers^{mod}
www.conversmod.de

Select "Run ELMConfig"

Set ELMConfig as follows:

Language => English

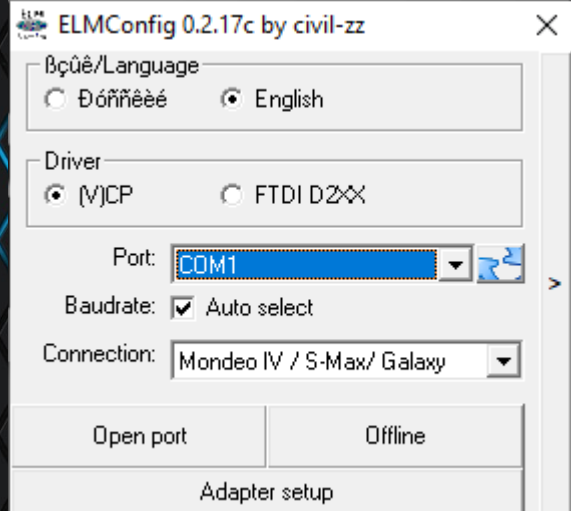
ELM327 => (V) CP

CM327 / ELS27 => FTDI D2XX

Port => port of the adapter (test if necessary)

Connection => Mondeo IV / S-Max / Galaxy

Choose "Open port"



Convers+^{mod}
www.conversmod.de

Wait for the timer to release the "Close" button in the following screen,
then press it
ELM327 switch to HS-Can
Select BCM from the list on the left
Right click on "Procedures"
"Read CCD from BCM"
Acknowledge warnings

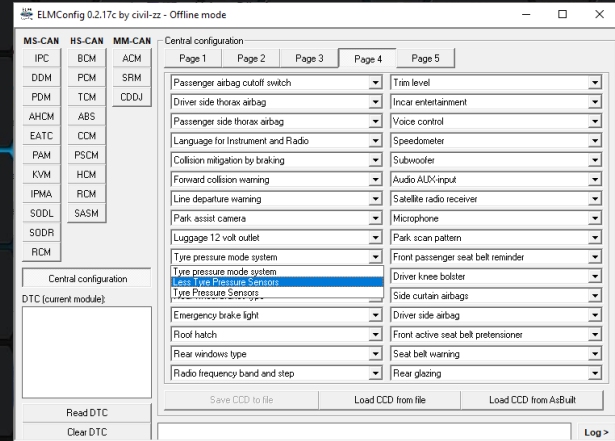
Convers+*mod*
www.conversmod.de

Only if you bought the TPMS patch:
Links to "Central Configuration"
Select "Page 4" above
Left column
"Less Tire Pressure Sensors"
switch to
"Tire Pressure Sensors"

Back to BCM / Procedures
Select "Write CCD to BCM", Confirm
warnings

Close ELMConfig

For UCDS users
Open UCDS



Convers+^{mod}
www.conversmod.de

Activate CAN mode Open AsBuilt Editor



Convers+^{mod}
www.conversmod.de

Choose your vehicle from the list
Click "Next>"

Read out BCM

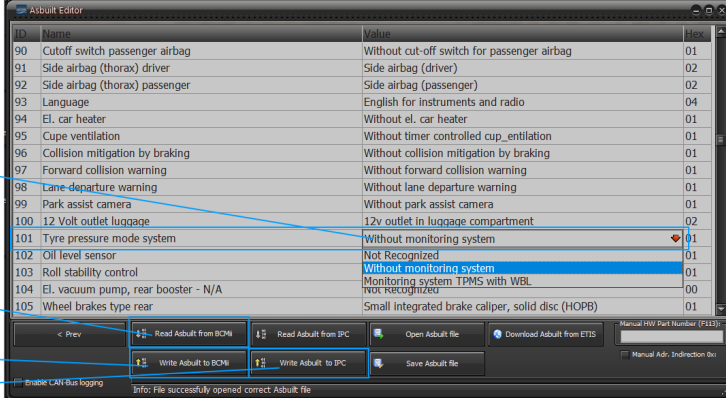
Line 101: change value
from
"Without monitoring
system"
on
"Monitoring system TPMS
with WBL"
BCM write

setting for TPMS

read BCM

write BCM

write IPC

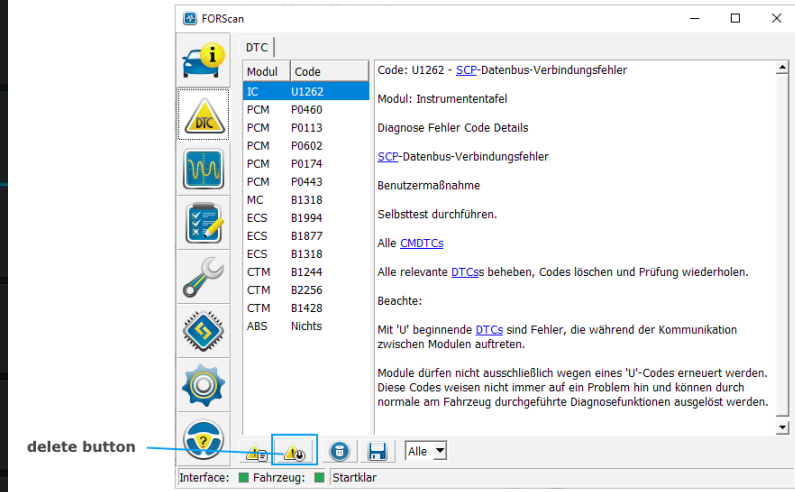


Convers+^{mod}
www.conversmod.de

From here on for everyone:

Switch ELM327 to HS-Can
Start Forscan
If no automatic connection is set,
Click the connect button
Wait for the search
is completed
(Status indicator = ready),
if necessary, instructions for
Follow switching
Press the DTC button

Press the delete button
Follow instructions to toggle switch if
necessary



Convers+^{mod}
www.conversmod.de

Finished

(Up to 3 fault codes, DTCs remain on vorFacelift vehicles. These are normal in connection with the ConversMod firmware and have no influence on functions or safety systems. DTCs: U0151: 00-2A, U2101: 00-2B, B0050: 00-2B)

Convers+*mod*
www.conversmod.de

9. More settings

You can make further settings using the gear icon:

Download of additional software (ELMConfig, Forscan, UCDS)

Adapt paths for additional software

Change language (Restart required)

Apply FTDI-Fix manually

Convers^{*mod*}
www.conversmod.de

Wishes? Questions? Any suggestions? Critics?

If you have an idea how our ModHelper 2.0 can be further improved, please send us a short information via the contact form:

www2.conversmod.de/Contact

**We thank you for your trust and hope you enjoy your new
ConversMod firmware!**

Convers+*mod*
www.conversmod.de